

What to Expect:

SEQUEL-Pomegranate Health Systems is an acute hospital for mental and behavioral health disorders and a secure residential treatment care facility (RTC) in Ohio.

Professional referrals are required for admission from counselors, doctors, case workers and children service professionals. Our treatment age range is 12-17.

We are licensed by The Ohio Department of Mental Health and Addiction Services and Accredited by The Joint Commission, also a member of OHA- the Ohio Hospital Association, and OCA, the Ohio Children's Alliance.

Here are some frequently asked questions:

AVERAGE LENGTH OF STAY:

*Acute: 7-10 days + aftercare appointments.

*RTC: 3-6 months average; up to a year.

Westwood-Lumin Academy schooling on-site.

VISITATION HOURS:

*Acute: M-F from 4pm to 7pm and Sat & Sun from 2-5pm. Up to 1 hour. Alternative arrangements must be cleared w. the therapist.

*RTC: 6-7:30pm for 20 min; 10-12:30pm and 5-7:30pm Sat & Sun for 1 hour. Alternative arrangements must be cleared with your case manager and/or therapist. Please don't bring in outside food, drink, phones.

BELONGINGS:

*Acute: 3 outfits; 1 PJs; 1 pair shoes without laces; 1 pair non-skid slippers.

*RTC: 7 outfits; 2 pair of shoes; belts permitted day only; No piercings. Hygiene products are provided. See the patient handbook for more information.

ASSIGNED THERAPIST, CPST & NURSE:

*Acute: Patients are assigned to a clinician upon admission. Nursing care on site 24/7.

*RTC: Clients are assigned a CPST-case manager, and therapist within 24 hours.

Our facility spans 54,000 square feet and was custom built for adolescent psychiatric needs in 2008, expanded in 2014 and acquired by SEQUEL Youth Services in October of 2016. We provide an intensive level of therapy in a structured secure environment.

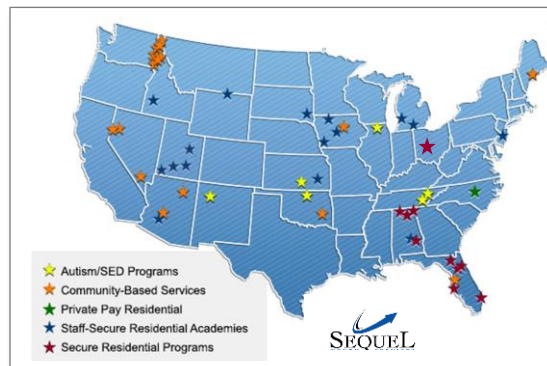
HEALING, HOPE & RESILIENCE



SEQUEL
Pomegranate
Health Systems
Acute Hospital & Center for Psychiatry



Pomegranate joined SEQUEL Youth Services 10-27-2016.



We
Change
Lives!



Visit us online at: www.SEQUEL-PomegranateHealthSystems.com



"Thanks for all you did for my son!"

"The staff there was amazing."

-2018 YSS-F survey



TREATMENT MAY INCLUDE:

- *Individual therapy
 - *Group therapy
 - *Family therapy
 - *Art therapy
 - *Nursing group
 - *DIGG group
 - *Recreation
 - *Mindfulness, yoga
- DBT & CBT-informed therapy
- (DIGG=daily individual goal group)

We Change Lives!

ADMISSIONS PROCESS - RTC & ACUTE:

***Acute:** 1) Hospitals or ERs can call or send referrals, labs, EKG results. Call 800-476-0868.
2) Direct admits can come from PCP primary care doc, schools, caseworkers, or counselors office. Intake referral forms, consents, videos can be found on the website under admissions tab.

***RTC:** Talk to the Admissions/UR Director or Manager. Call 614-223-1650. She can discuss your case, Medicaid, and commercial insurance. Admission is up to clinical or medical director, meeting criteria, and bed availability. Forms & admission & welcome videos are on the website.

MEDICATION CONSENT PROCESS:

***Acute:** The CNP or MD will call parents regarding consent. All medication is reviewed within 24 hours. Treatment team meets regularly.

MEDICATION CHANGES:

***Acute:** reviewed daily
***RTC:** reviewed weekly

GENESIGHT® by ASSUREX HEALTH TEST:

***This** requires doctor's order. Test assesses which psychotropic meds work best with patient's metabolism based on a DNA cheek swab.
***Results** are given within 72 hours after the FED-X sample is picked up.
***Consents** for the test will need to be signed by parent or guardian.

CLIENT RIGHTS:

***Please refer to the patient handbook; also available on our website. See HIPAA privacy policy. Consent forms must be signed by parent/guardian to share your information with anyone.**

PHONE CALL TIMES:

***Acute:** 6-7pm (only patients who did not get a visit).
***RTC:** Each unit has assigned times. Refer to your unit schedule or ask your CPST.

DISCHARGE:

***Acute:** Discussed on a daily basis in treatment team. Discharge date could be the same day of the treatment team decision.
***RTC:** Is determined with the assistance of county or court caseworkers, CPST & therapist.

EDUCATION:

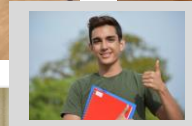
***Education** is offered by Lumin Academy on-site. Supplemented by tutors from Columbus City Schools.
Copyright, April 2019



SEQUEL
Pomegranate
Health Systems
Acute Hospital & Center for Psychiatry

RESIDENTIAL TREATMENT & EMERGENCY SHELTER CARE *Frequently asked questions*

Secure Residential Treatment is for mental health disorders, behavioral health disorders or a 45 day diagnostic evaluation. Secure residential treatment is indicated for teens who are referred by county children service, the juvenile court system, probation, social work or mental health professionals. Emergency Shelter Care: A youth may have been removed from home due to dysfunctional home environment by child protective services. A residential stay may range from 30 days to 6 months- is typically about 3 months.



ACUTE PSYCHIATRIC HOSPITAL

Frequently asked questions

Our Acute Hospital is for teens who may be a danger to themselves or others-with suicidal or homicidal ideation or psychosis. Teens are referred through emergency rooms, crisis centers, doctors or mental health pros. A stay is typically 7-10 days.

MISSION:

The mission of Sequel Pomegranate is to help children and adolescents and their families recover from the effects of mental illness, learn to care for themselves and each other; and achieve the highest possible quality of life in their homes and communities.

INSURANCE:

We take most insurances and Medicaid.

SEQUEL-POMEGRANATE:

765 Pierce Drive (Franklinton area)

Columbus, Ohio 43223

614-223-1650

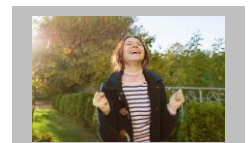
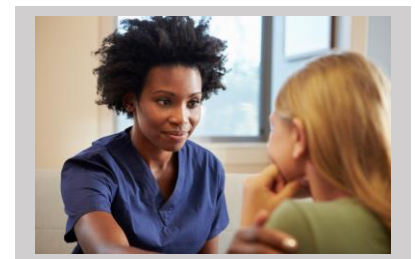
Acute: 800-476-0868

Fax 888-679-9808

www.SEQUEL-PomegranateHealthSystems.com
referrals.pomegranate@sequelyouthservices.com

Review our quality ratings. The 'report card' is posted online.

HEALING, HOPE & RESILIENCE



Our goal is for you to thrive in life!